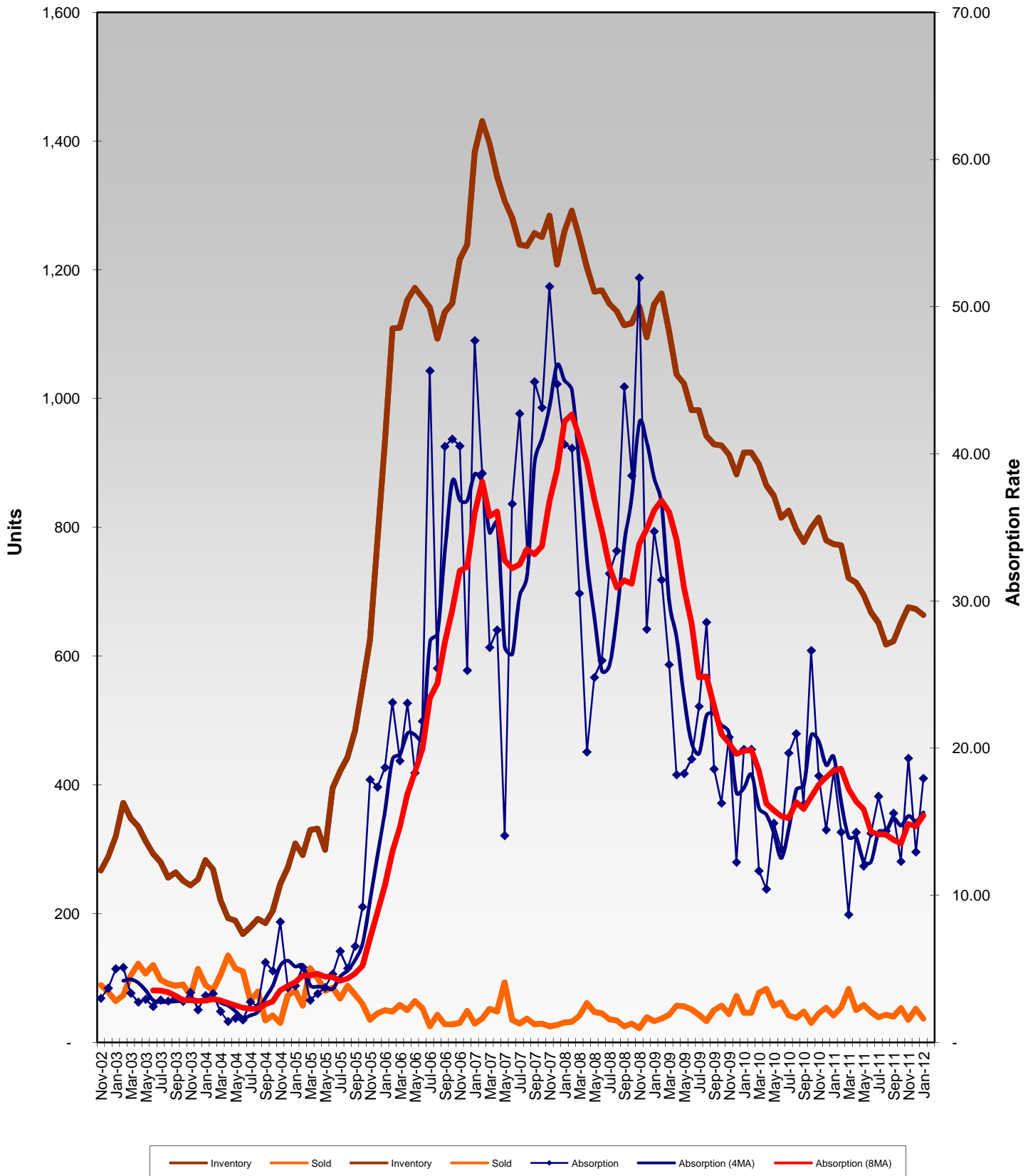


## Inventories and Absorption Rates - Condominium

Martin County, Florida - November 2002 through January 2012



©Thurlow, Thurlow & Giachino, P.A. all rights reserved. Chart data from MLS information published by the Realtor Association of Martin County. This information represents past performance. Past performance is not necessarily a guide to future performance. THURLOW, THURLOW & GIACHINO, P.A. MAKES NO WARRANTY OF ANY KIND, EXPRESS OR IMPLIED, INCLUDING, BUT NOT LIMITED TO, THE IMPLIED WARRANTIES OF MERCHANTABILITY AND FITNESS FOR A PARTICULAR PURPOSE OR AS TO THE ACCURACY OF THE CHART DATA.